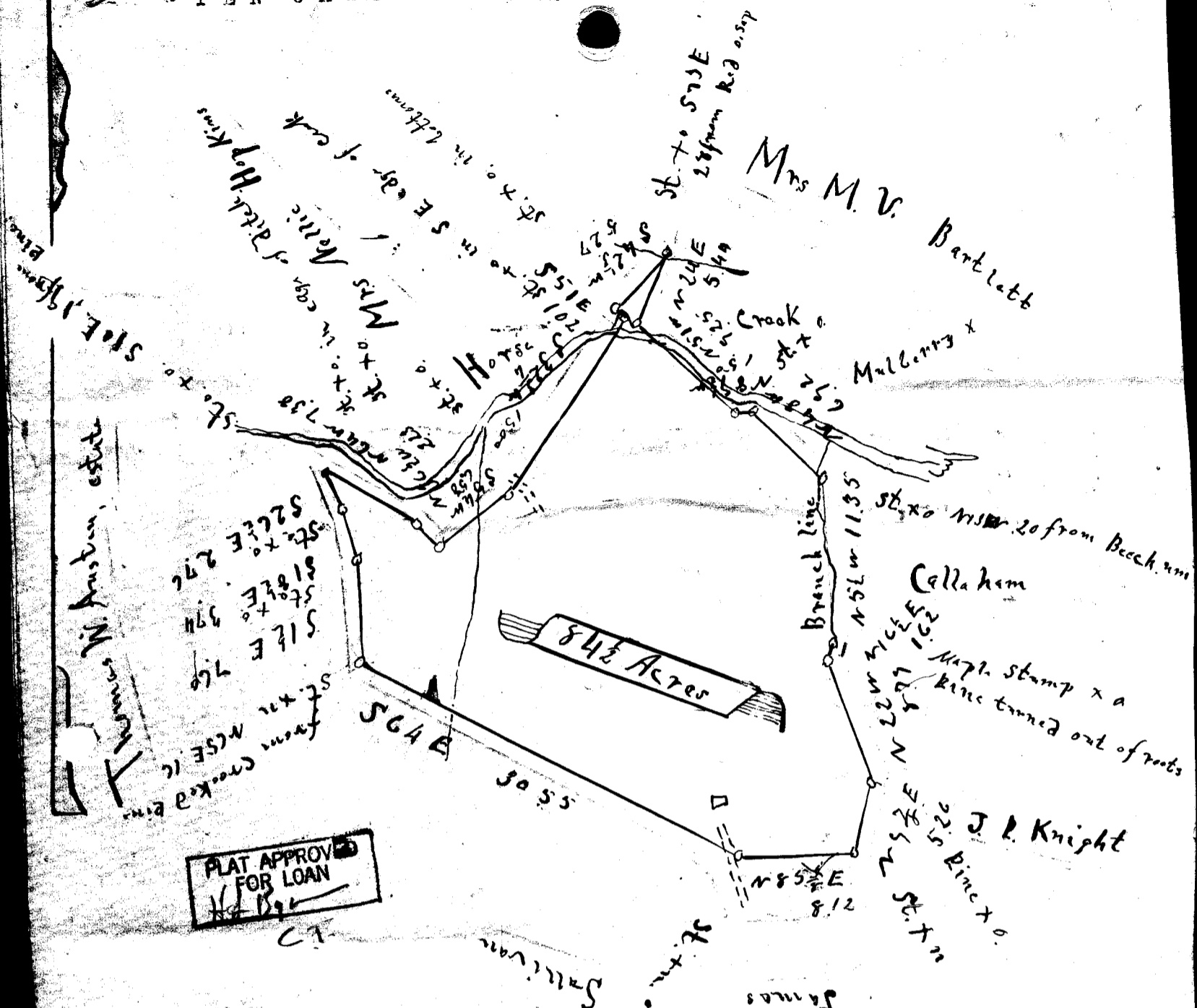


TEN CHSPER INCH.



SOUTH CAROLINA,
GREENVILLE COUNTY.

The above plat represents eighty four and one-half acres belonging to John Oliver situated in the state and county aforesaid, on Horse creek, waters of Reedy river.

I, the undersigned surveyor, hereby certify that I surveyed the said tract, about 1908/ but the names of parties represented as adjoining said tract, are the names of the parties who now adjoin said tract?
This January 8th 1934.

State Registered Surveyor.

#32878 15 DEC 1934

8108-157